

SLIDING TUB / SHOWER ENCLOSURE WITH STATIONARY INLINE PANEL

This instruction sheet applies to the following units. C391, C396, C791, C796, C891, C896

This instruction sheet also applies to the following units. VTE / VSE 180, FTE / FSE 180.

Item	Part #	Description	QTY
1	1040	Tub Header	1
2	1062	Stay Clean Sill	1
3	1051	Tub Jamb	1
4	1159	180° Post	1
5	1268	Wall Channel	1
6	1070	Panel Sill (Except Notched Panels)	1
7	2019	Header Support Clip	1
8	7106	Panel	1
9	4013	Thin Vinyl (Not Shown)	4
10	2101	#8 x 1-1/2 FHPHSMS	6
11	2217	Wall Anchor	6
12	2102	#6 x 3/8 PHPHSMS	6
13		Sliding Glass Panels	2

PLEASE READ THOROUGHLY BEFORE STARTING INSTALLATION



SAFETY WARNING:



- These instructions must be followed carefully to reduce the risk of serious injury. Any deviation from these instructions can create a serious safety hazard.

- Glass panels are tempered to conform with general building and safety codes. Be very careful handling tempered glass. Especially protect all edges of the glass from contact with hard surfaces.

- All exposed aluminum edges should be deburred to avoid serious injury.

SPECIAL NOTE:

Drilling holes and anchoring horizontal sills and curbs to thresholds and tub decks is discouraged. Using masking tape or double-sided tapes to hold these components down during installation is recommended to minimize the potential for water leaking underneath flooring. These instructions do not recommend drilling holes on horizontal surfaces for this reason.

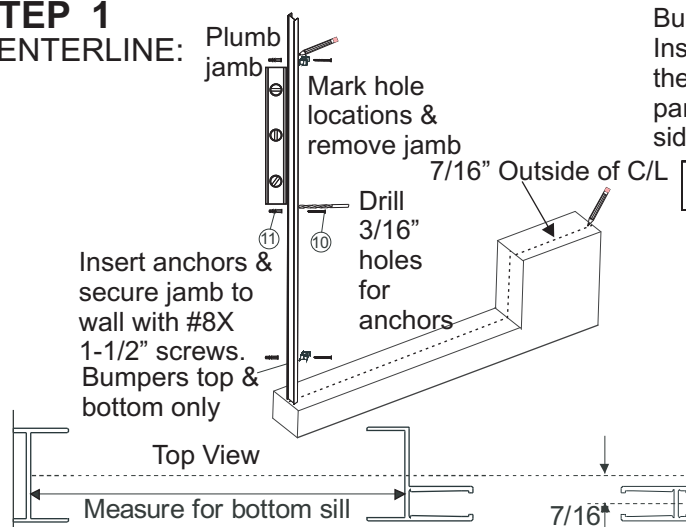
TOOLS REQUIRED FOR INSTALLATION

1. Caulking gun w/ clear sealant (recommended)
2. Level
3. Hacksaw
4. Painters Tape
5. Electric drill & #2 Phillips Tip
6. 1/8" Drill bit for #6x screws
7. 3/16" Drill bit for plastic Anchors (Carbide for Tile)
8. Mallet (Rubber or Wood)
9. Mill file to smooth cut and radius corners
10. Tape measure

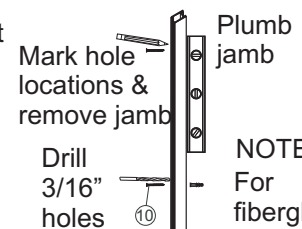
CAUTION: Adjust the torque as low as possible when installing screws to avoid stripping out the holes and snapping off the heads of stainless steel screws.

STEP 1

CENTERLINE:



Bumpers are directional. Install the bumpers so that they will receive the inside panel on the shower head side.



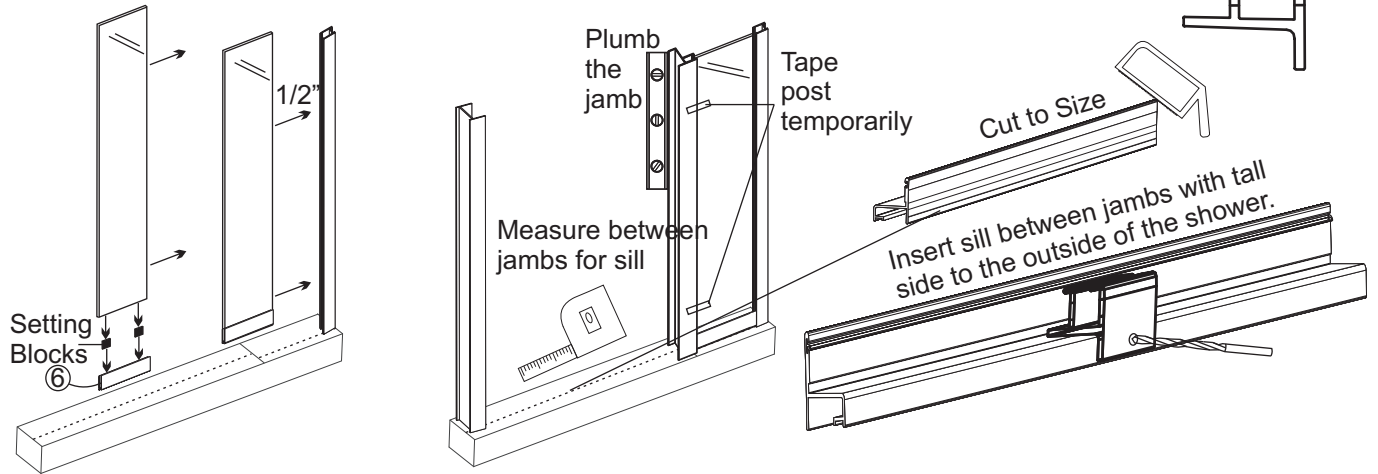
Insert anchors & secure jamb to wall with #8X1-1/2" screws.

NOTE:
For fiberglass and acrylic units drill 1/8" holes and eliminate the plastic anchors.

Please refer to the following steps for the stationary panel that you have.

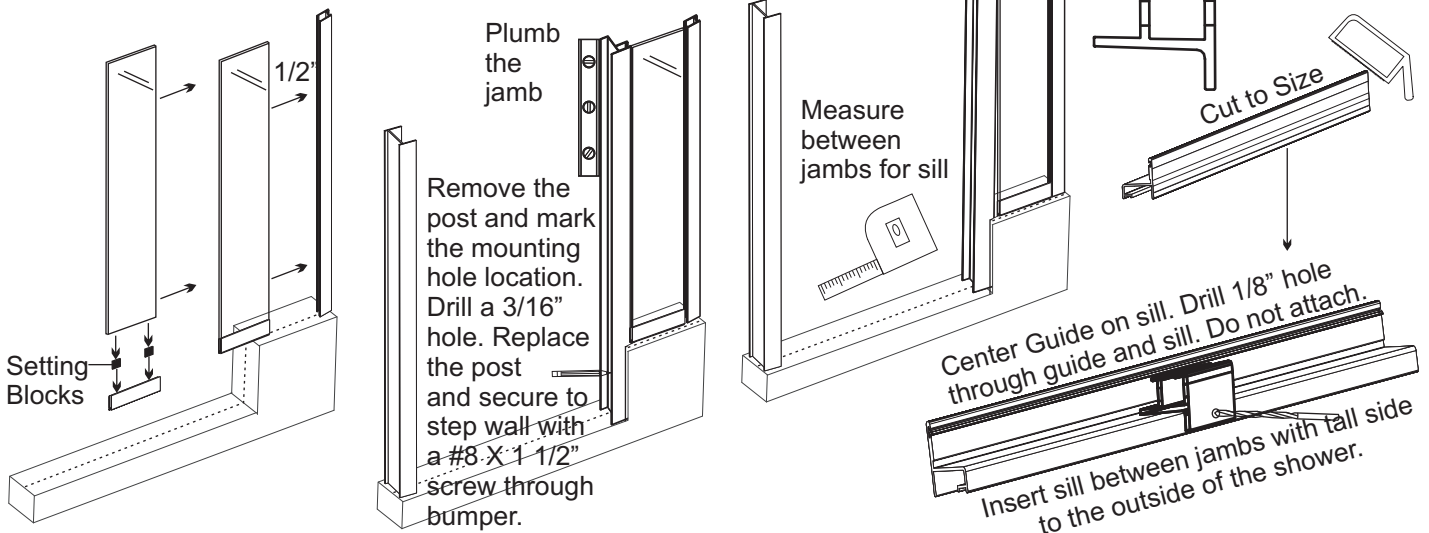
STEP 2A
INSTALLING FULL HEIGHT STATIONARY PANEL & SILL

CENTER GUIDE 2206
(Frameless)



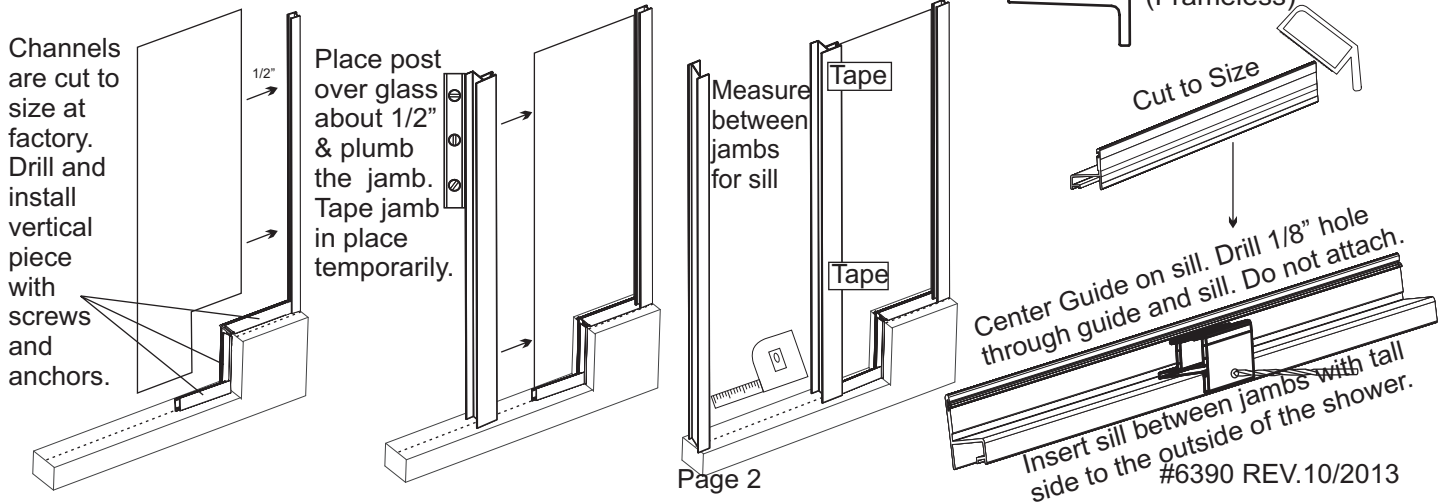
STEP 2B
INSTALLING STATIONARY STEP PANEL & SILL:

CENTER GUIDE 2206
(Frameless)



STEP 2C
INSTALLING NOTCHED STATIONARY PANEL & SILL

CENTER GUIDE 2206
(Frameless)



All headers fit onto the top of the units in the same way. The style of header that you have will depend on which unit that have purchased.

STEP 3
HEADER INSTALLATION:

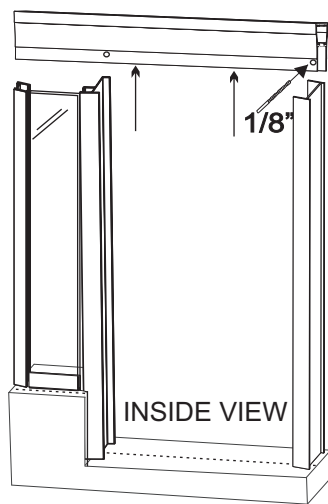
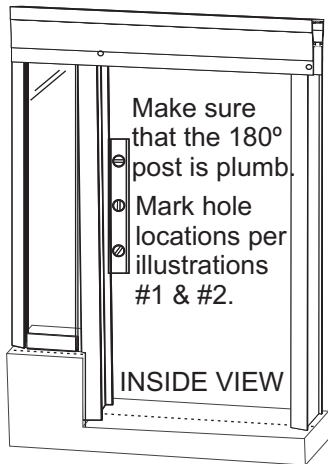
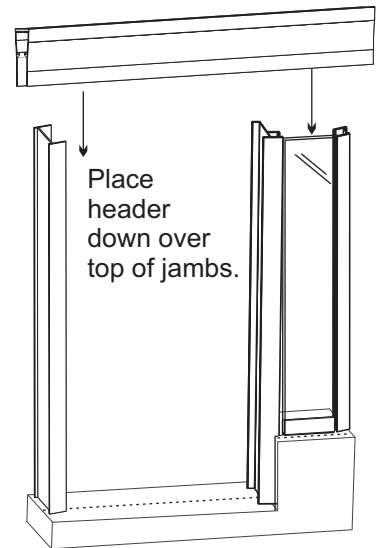
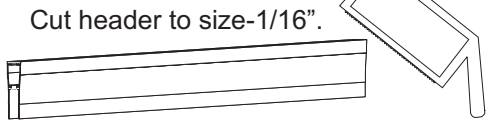
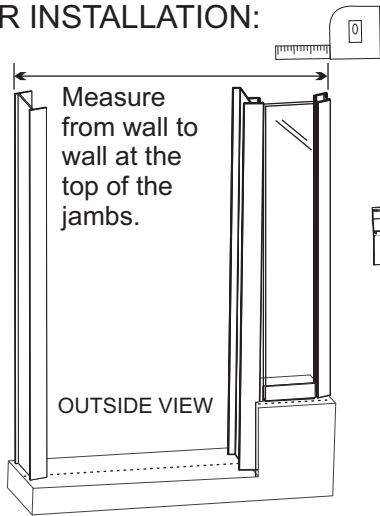
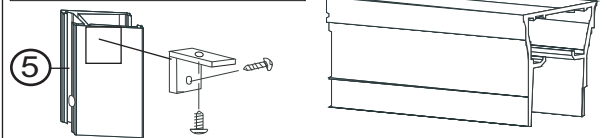
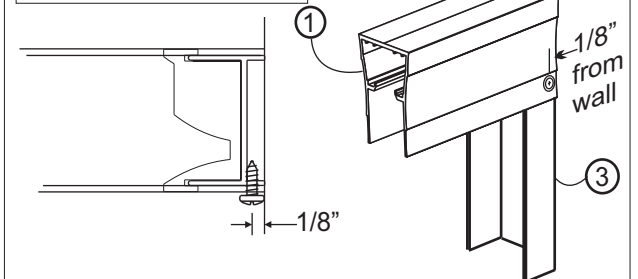


ILLUSTRATION #1



Header support clip mounting location from inside of shower.

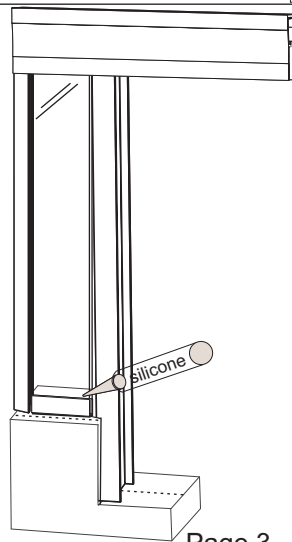
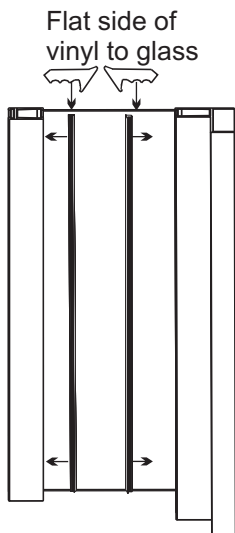
ILLUSTRATION #2



SAFETY WARNING:

Improper screw placement could cause damage to the glass.

Remove the header & drill 1/8" holes in the header at marked locations. Install header clip onto the wall channel. Replace header and drill through holes into jambs. Be very careful to avoid the panel glass. Do not attach.



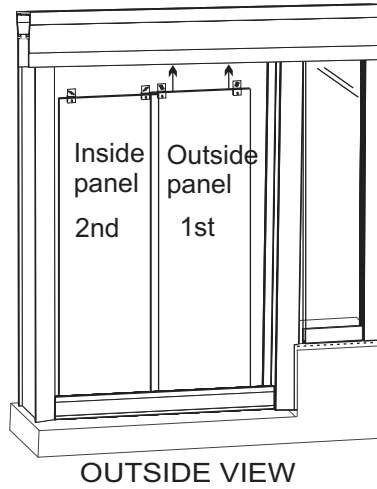
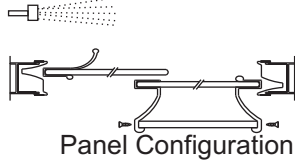
Insert vinyl between glass & vertical channels, on the outside and inside of the panel. If glass is textured, insert the vinyl on the textured side of the glass first. If the vinyl is tight, use soapy water to lubricate the vinyl. A block of wood or plastic may also give some leverage to push the vinyl in between the glass and the channels. After the vinyl is installed, seal the sill with silicone inside and outside and where the channel meets the tile or finish material. Notched panels will use vinyl on the step channels.

SLIDING TUB / SHOWER ENCLOSURE WITH STATIONARY PANEL INLINE

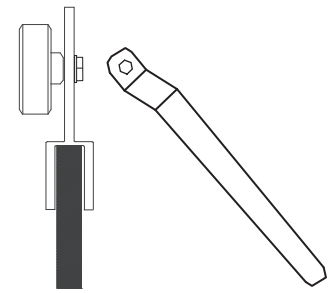
STEP 4

PANEL INSTALLATION:

Place both panels inside of the shower on a padded surface. Install outer panel first by hanging the panel from the rollers on the front channel inside of the header. Hang the inside panel on the on the back channel of the header. The inside panel should always be on the shower head side to prevent water from splashing between panels.



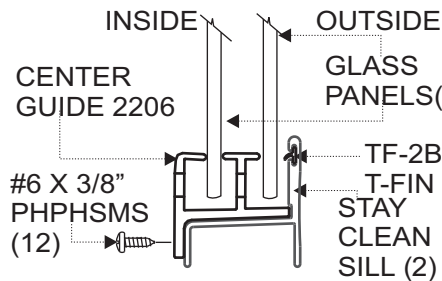
Side View



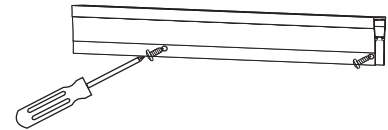
Adjust the rollers in the diagonal slots with the adjustment tool provided if the panels do not meet the jambs evenly, or if the panels drag on the sill or are too high above the sill. Be sure to tight screws securely.

STEP 5

GUIDE INSTALLATION:

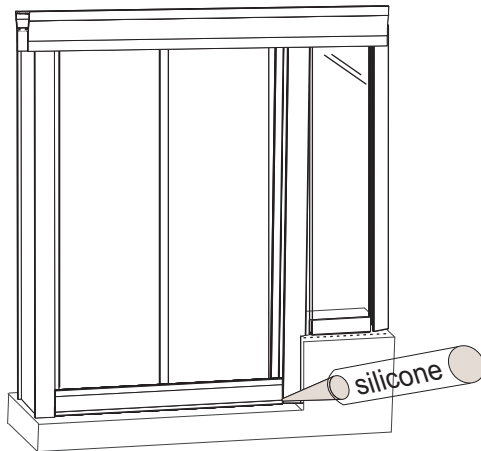


Slide both panels to one side. Install the panel guide by setting the guide on the sill and sliding it under the panels so that the glass fits in the correct slot of the guide. Line the guide up with the hole that was drilled through the guide and sill in step 2. Insert a #6X3/8" pan head screw and carefully tighten until snug. The panels should be just above the guide.



From the inside of the shower, insert the #6 X 3/8" screws to attach the header to the jambs. Make sure the screws do not interfere with the glass panels. Tighten the screws with a screwdriver or reduce the torque on an electric drill to avoid stripping out the holes.

STEP 6 SEALANT:



Apply a bead of sealant along the entire outside of the enclosure where it meets the wall and base. Pay special attention at the bottom corners where the Tub Jambs meet the Stay Clean Sill. These joints must be totally sealed for a leak proof installation.

These installation instructions must be followed to ensure proper operation of the door and to reduce the risk of serious injury. Any deviation from these instructions can result in a serious safety hazard.



All exposed ends of aluminum that are rough, sharp or jagged due to the metal being cut, drilled or damaged should be deburred, smoothed or rounded by the installer before installation. Failure to do so could result in serious injury to the user of the enclosure.

NOTE:

You may have unused items leftover depending on the desired configuration selected. For installation and technical support please reference the shipping document, the box the product was shipped in, or call the store where you purchased the product.